



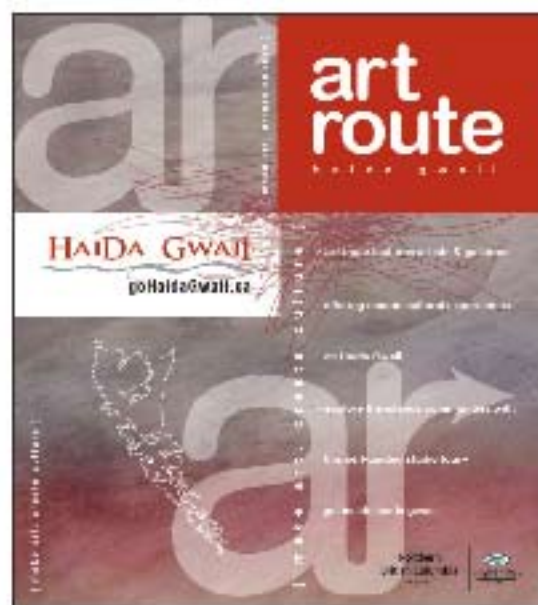
welcome

These Islands are remote and that's part of the appeal for artists who make their home here. •• The natural beauty of this place inspires all kinds of art — from traditional and contemporary Haida carving and weaving, to post-modern quilting, painting and pottery.

•• Unlike other studio tours concentrated over a week or weekend, **art route** runs year-round. Because of this extended commitment, some artists prefer visitors to call ahead while others maintain regular hours during the entire season. Please, don't be shy about contacting artists or visiting homes and studios during posted hours. •• The economy of the Islands is changing. There is now less emphasis on resource extraction by outside interests and more locally driven solutions. The arts play a large role in this shift and by putting visitors in contact with artists, **art route** contributes to the livelihoods of artists and business owners. Welcome to these shining Islands and enjoy **art route 11**.

Haida Gwaii

When you've reached the edge of your world, ours begins.



welcome to
**queen
charlotte**

Situated at the south end of Graham Island, Queen Charlotte is nestled between the ocean and the mountains and is alive with arts, culture and outdoor activities. •• With just over 1000 residents, the Village of Queen Charlotte is the Islands' newest municipality — incorporating in 2005. •• The community has many active official and ad hoc art groups. Events are advertised on notices boards so keep a look out. •• Queen Charlotte has all the amenities a traveler will need including a wide variety of accommodation, restaurants and an active visitor information centre.

Haida Gwaii

goHaidaGwaii.ca

queen charlotte



3 Mike Brown and Bill Walker

Haida Gwaii art from pictures to etched glass balls. Haida argillite carving by Mike Brown. Look for the little cabin and the big garden.

1266 Oceanview Dr

250.559.8977

Open dawn til dusk



4 Gaston Cantin

wood artisan

Rainforest Wood Creations

Functional wood art crafted from salvaged wood, indigenous to Haida Gwaii. Yew wood cutting boards, and spatulas always available.

1009 2nd Ave

250.559.8160

rainforest@hgqci.org



5 Sandra Price

Haiku Quilts

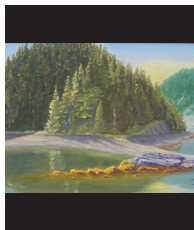
Colourful hand-quilted and -embellished quilts illustrating original hand-embroidered poems and stories.

918 Oceanview Drive

(west end of QC)

(250) 559-8949 (call ahead)

sandra_maria_price@yahoo.ca



6 Denis Bell

landscape painter

Denis has been painting for over 7 years. The mediums he prefers are oils and watercolour and the landscapes are from Haida Gwaii. Please call ahead.

701 7th street

250.559.8380

queen charlotte



7 Nancy Hett

Moresby Mountain Studio

Functional pottery in bright colours that reflect island themes. Located at Spruce Point lodge. Come and visit Nancy at her fully functional studio.

611 6th Ave

250.559.8234

Afternoons daily



8 Kiki van der Heiden visual & fibre artist

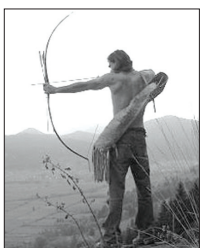
Living and working surrounded by sea life, rich forests and the ever-changing sky, Kiki's work is a reflection of nature's energy. She works with acrylic paints on canvas and creates felt, knit and sewn pieces.

Her work can be found at Sitka Studio in Tlell.

Robertson Island

250.559.8435

<http://www.absolutearts.com/voorkiki/>



9 Michael Mayr classically trained sculptor

A variety of hand crafted objects made from natural materials: primitive archery equipment, forged knives, leatherwork, wood and stone carvings. Knife and tool sharpening. Workshops available- make your own under Michael's guidance! Also offering music lessons. Carver for hire. Open Mondays or by appointment.

info@michaelmayrcreates.com

www.michaelmayrcreates.com

501B 2nd Ave

No phone but look for AR sign

queen charlotte



10 Marla Abbott Seaside Gifts

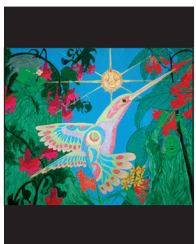
Seaside Gifts features photo-covered light switch plates with Haida Gwaii images, quilting projects (large & small), sewing and craft items.

If the sign is out, we're open!

Marla Abbott

404 Oceanview Drive

250.559.4242



11 Tom Oord ink artist

Born to Dutch immigrants, Tom grew up in Kitwanga, BC and has been an ink artist for the past five years. Tom also has a talent for designing and creating handmade walking canes after having made several for himself to assist with his balance.

250.559.8116

364- 2nd ave

Martin Manor building



queen charlotte



12 Barb Rowsell fibre artist

Hand-dyed, spun, knit or woven wool hats and blankets reflecting textures and colours of Haida Gwaii. By appointment in winter. Work available at Sitka Studio in Tlell or the Visitor Centre in Queen Charlotte

216 Bay Street

250.559.8207

anvilcove@qcislands.net



13 Queen Charlotte Visitor Centre

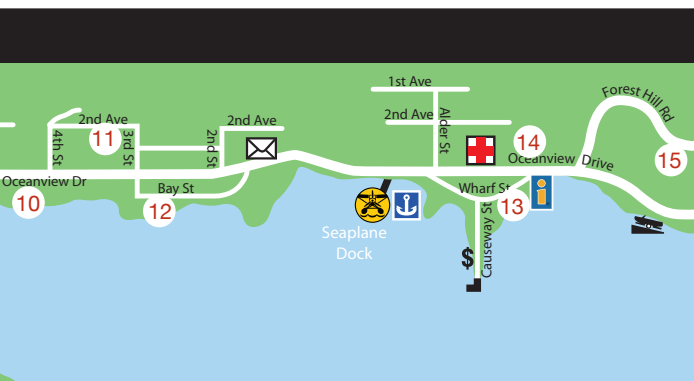
Two artisan galleries, an extensive retail selection, and a one of a kind 130ft locally made frieze are a few highlights you'll find at the QCVC. Touch tank aquarium, interpretive garden, picnic area, and more await. Visitor information, booking, and reservation services are available.

3220 Wharf St.

250.559.8316

www.qcinfo.ca

Open year round, extended summer hours!



16 Picture That Framed
0.6 km →

17 Sheila Karrow
4 km →

art route - 13

queen charlotte



14 Jackie's Island Jewellers

A one stop shop from Art to Accommodation. Come in and take a look at our hand crafted gem stone agates, jewellery, argillite pendants, and sculptures. Centrally located in the heart of Queen Charlotte at the Sea Raven Inn.

3301 Oceanview Drive
250.559.4423
tojjack@hotmail.com
open daily 8am-7pm



15 Brian Eccles potter & silversmith

Works in clay, stone and silver incorporating natural impressions found on the Queen Charlotte Islands.

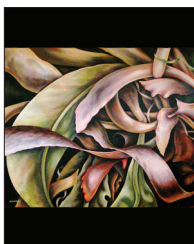
3518 3rd Avenue (Forestry Hill)
250.559.8704
www.charlottegraphics.ca
By appointment



16 Linda Kumpula Picture That Framed

Linda Kumpula is a certified picture framer with a large selection of matting and metal moulding in stock. Shrink wrap service.

3825 Oceanview Drive
250.559.4741
lkumpula@qcislands.net
By appointment



17 Shelia Karrow visual artist & educator

Shelia's detailed watercolour and acrylic landscapes contain elements of realism and abstraction. Workshops and courses available. 4605 Martinuik Road.

250.559.7702
info@sheliakarrow.com
www.sheliakarrow.com
By appointment